

Non-Isolated Single Output DC-DC Converter

FEATURES:

- 3PIN SIP Package
- Pin-out compatible with LM78XX Linears
- UL94V-0 Package Material
- Operating Temperature:-40°C TO +85°C
- Efficiency up to 96%,Non isolated,no need for heatsinks
- Short circuit protection
- Wide input voltage ranges 4.75~36VDC

Specifications typical at TA=25°C, nominal input voltage and rated output current unless otherwise specified

Part Number	Input Range	Output Voltage	Output Current	Efficiency	
	Vdc	Vdc	mA	Min.Vin(%)	Max.Vin(%)
AS2000R-1,8VCF	4.75-36	1.8	2000	89	80
AS2000R-2,5VCF	4.75-36	2.5	2000	91	83
AS2000R-3,3VCF	4.75-36	3.3	2000	90	86
AS2000R-5,0VCF	6.5-36	5.0	2000	92	89
AS2000R-6,5VCF	9.0-36	6.5	2000	93	91
AS2000R-9,0VCF	12-36	9.0	2000	94	92
AS2000R-12VCF	15-36	12	2000	95	93
AS2000R-15VCF	18-36	15	2000	96	94

Input Specifications

Parameters	Conditions	Min	Typ	Max	Units
Input Voltage Range	See table	4.75	24	36	V
Internal Input Filter	Capacitors		10		uF
No load input current	Vin=24V		15	20	mA

Output Specifications

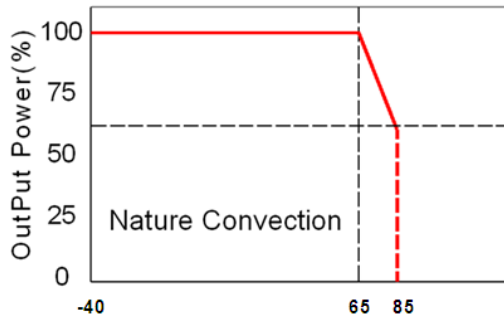
Parameters	Conditions	Min	Typ	Max	Units
Voltage Tolerance			±2	±3	%
Short Circuit Protection	Indefinite, automatic recovery				
Line Regulation	Vin=min to max at full Load		±0.5		%
Load Regulation	10% To 100% F.L.		±0.5		%
Current Limit	Duty=40%		325		%
Ripple & Noise (without Output Capacitor)	100% F.L. BW=20MHz			100	mVp-p
Transient response setting time	50% load step change		350		us
Capacitive load	ESR > 1m ohm		470	1000	uF

General Specifications

Parameters	Conditions	Min	Typ	Max	Units
Temperature Coefficient	-40°C ~+85°C ambient			0.015	%/°C
Switching Frequency			500		KHz
Operating Temperature	See Temperature Derating Graph	-40		85	°C
Storage Temperature		-55		125	°C
Humidity	Non Condensing			95	%
Cooling	Free air Convection				
Case material	Non-Conductive Black Plastic				
Weight			4.0		g
Dimensions		11.5x7.5x10.0			mm
MTBF(+25°C)	using MIL-HDBK 217F		1630x10 ³		Hours
Derating	1.5%/K above +50°C				

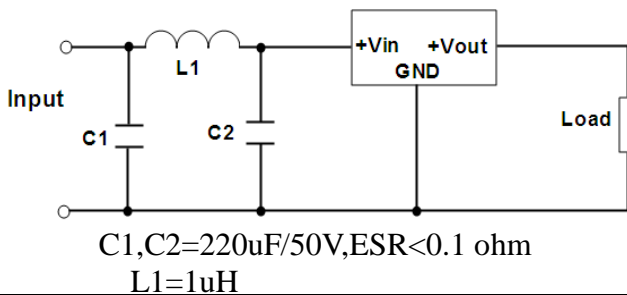
Non-Isolated Single Output DC-DC Converter

Temperature Derating Graph



Application Examples

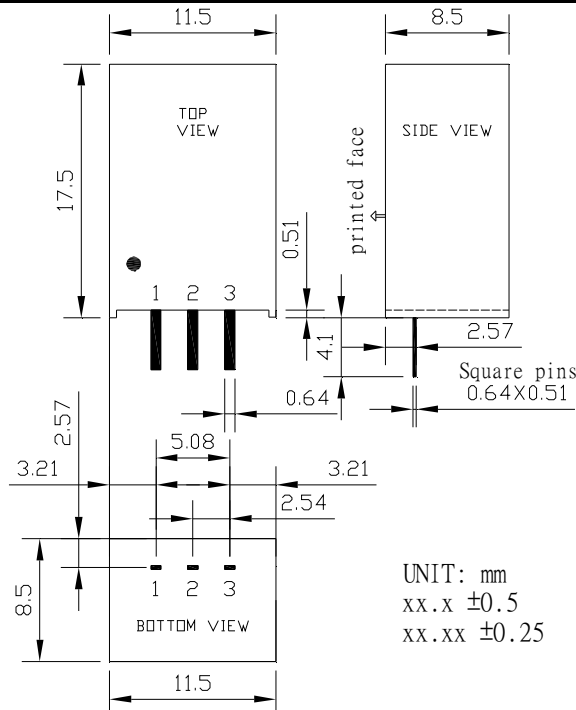
Part Number



AS2000 R - 1.5 V C F
1 2 3 4 5 6

- 1:Series
- 2:Regulated
- 3:Output Voltage
- 4:Case
- 5:Short Circuit Protection Continuous
- 6:Efficiency up to 96%

Markings and Dimensions



PIN Connection

PIN	1	2	3
SINGLE	+Vin	GND	+Vout