

DC-DC Astra
AS8A-xxSxxLPC
AS8A-xxDxxLPC

ООО Компания “Элемент”



Wide Input Voltage Range 8 Watt Dc-Dc Converter

FEATURES:

- 2:1 Wide Input Voltage.
- 8 Watt 24PIN DIL Package.
- Efficiency To 82%
- PI Input Filter.
- 1600Vdc Isolation
- MTBF:>1,500,000 hrs Operating Temperature:-40°C TO +100°C



Specifications typical at TA=25°C, nominal input voltage and rated output current unless otherwise specified						
Part Number	Input Voltage	Input Current		Output Voltage	Output Current	Efficiency
		No-Load (mA TYP)	Full Load (mA TYP)			
AS8A-05S12LPC	4.5-9	25	1927	12	666	83
AS8A-05S15LPC	4.5-9	25	1927	15	533	83
AS8A-05D12LPC	4.5-9	25	1927	±12	±333	83
AS8A-05D15LPC	4.5-9	25	1927	±15	±266	83
AS8A-12S03LPC	9-18	20	784	3.3	2424	85
AS8A-12S05LPC	9-18	20	784	5	1600	85
AS8A-12S12LPC	9-18	20	784	12	666	85
AS8A-12S15LPC	9-18	20	784	15	533	85
AS8A-12D05LPC	9-18	20	784	±5	±800	85
AS8A-12D12LPC	9-18	20	784	±12	±333	85
AS8A-12D15LPC	9-18	20	784	±15	±267	85
AS8A-24S03LPC	18-36	20	392	3.3	2424	85
AS8A-24S05LPC	18-36	20	392	5	1600	85
AS8A-24S12LPC	18-36	20	392	12	666	85
AS8A-24S15LPC	18-36	20	392	15	533	85
AS8A-24D05LPC	18-36	20	392	±5	±800	85
AS8A-24D12LPC	18-36	20	392	±12	±333	85
AS8A-24D15LPC	18-36	20	392	±15	±267	85
AS8A-48S03LPC	36-72	15	196	3.3	2424	85
AS8A-48S05LPC	36-72	15	196	5	1600	85
AS8A-48S12LPC	36-72	15	196	12	666	85
AS8A-48S15LPC	36-72	15	196	15	533	85
AS8A-48D05LPC	36-72	15	196	±5	±800	85
AS8A-48D12LPC	36-72	15	196	±12	±333	85

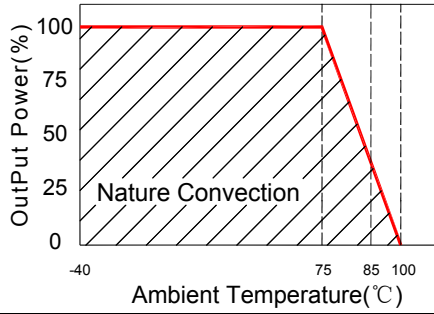
Input Specifications						
Parameters	Conditions	Min	Typ	Max	Units	
Voltage Types				2:1		
Filter	PI TYPE					

Output Specifications						
Parameters	Conditions	Min	Typ	Max	Units	
Voltage Tolerance				±2	%	
Short Circuit Protection	Continuous					
Line Regulation				±0.5	%	
Load Regulation	Single (F.L To 10% Load)			±0.5	%	
Load Regulation	Dual (F.L To 1/4 Load)			±1.0	%	
Ripple & Noise	BW=DC To 20MHz			100	mVp-p	
Transient response setting time	50% load step change		350		us	

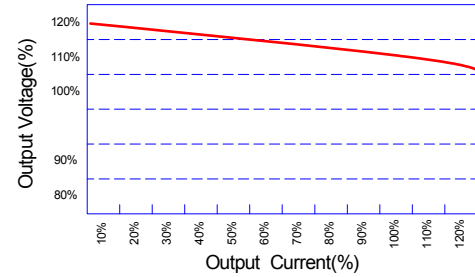
General Specifications						
Parameters	Conditions	Min	Typ	Max	Units	
Isolation Resistance	500Vdc	1000			MΩ	
Switching Frequency			400		KHz	
Operating Temperature		-40		100	°C	
Humidity	Non Condensing			95	%	
Cooling	Free air Convection					
Case material	Nickel Coated With Non-Conductive Base					
Weight			16.2		g	
Dimensions			31.6x20.1x10.0		mm	
Potting Material	Epoxy (UL94V-0 rated)					
Radiated Emissions	EN55022	CLASS A				
Radiated Emissions	FCC 47 CFR Part 15 subpart A	CLASS A				

Wide Input Voltage Range 8 Watt Dc-Dc Converter

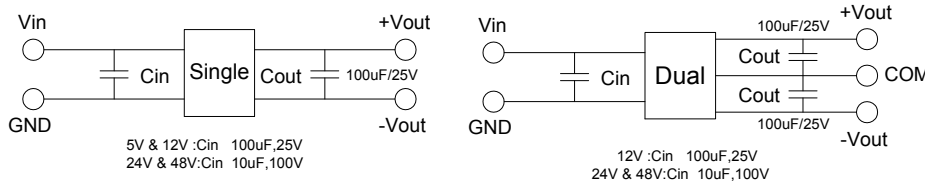
Temperature Derating Graph



Tolerance Envelope Graph



Recommended Test Circuit



5V & 12V :Cin 100uF,25V
24V & 48V:Cin 10uF,100V

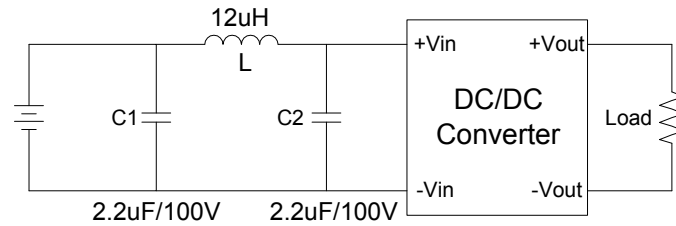
12V :Cin 100uF,25V
24V & 48V:Cin 10uF,100V

Part Number

AS8 A- 05 S 05 LP C
1 2 3 4 5 6 7

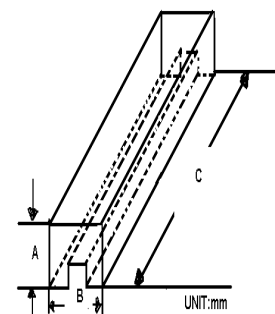
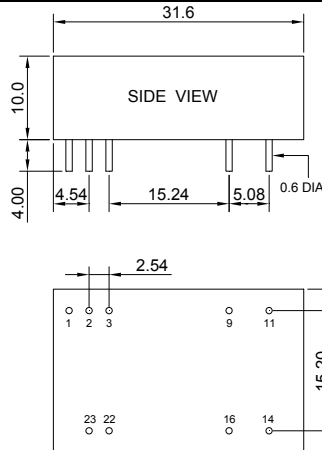
- 1:Series
- 2:Working temperature 40°C TO +100°C
- 3:Input Voltage
- 4: (S) Single D (dual) Output
- 5:Output Voltage
- 6:Case
- 7:Short Circuit Protection Continuous

Suggest adding input external filter(C1,C2,L)to meet conducted emissions(En55022 class A)



Markings and dimensions

Packaging



SIZE(mm)		
A	B	C
18.71	23.00	522

UNIT:mm XX.X±0.5 XX.XX±0.25

PIN Connection

PIN	1	2,3	9	11	14	16	22,23
SINGLE	Remote On/Off	-Vin	NC	NC	+Vout	-Vout	+Vin
DUAL	Remote On/Off	-Vin	Common	-Vout	+Vout	Common	+Vin

NOTE:Pin Size is Tolerance 0.6Φ ±0.05mm