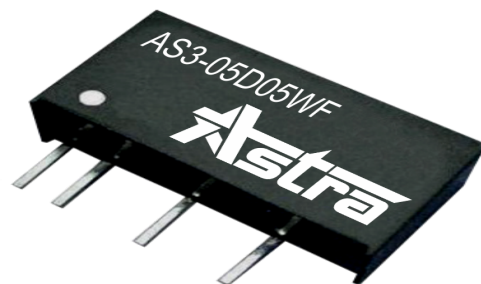




1000Vdc Isolation Dual Output 3 Watt Dc-Dc Converter

FEATURES:

- 7PIN SIP Package
- High Efficiency up to 87%
- Unregulated Output Types
- Internal SMD Construction
- No External Component Required Industry Standard Pinout
- Operating Temperature:-40°C TO +85°C



Specifications typical at TA=25°C, nominal input voltage and rated output current unless otherwise specified			
Part Number	Output Voltage	Output Current	Efficiency
	Vdc	mA	%TYP
AS3-05D05WF	±5	300	82
AS3-05D09WF	±9	165	85
AS3-05D12WF	±12	125	82
AS3-05D15WF	±15	100	85
AS3-12D05WF	±5	300	82
AS3-05D09WF	±9	165	85
AS3-05D12WF	±12	125	86
AS3-05D15WF	±15	200	87
AS3-24D05WF	±5	300	82
AS3-24D09WF	±9	165	85
AS3-24D12WF	±12	125	85
AS3-24D15WF	±15	100	86

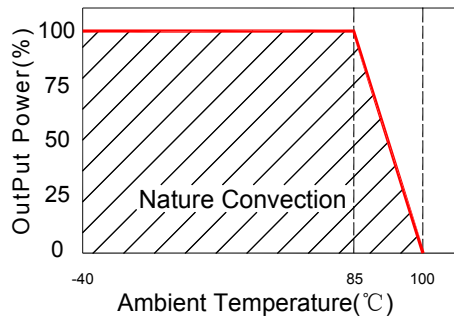
Input Specifications					
Parameters	Conditions	Min	Typ	Max	Units
Voltage Tolerance	Vo, Io Nom			±10	%
Filter	Capacitor				

Output Specifications					
Parameters	Conditions	Min	Typ	Max	Units
Voltage Tolerance	100% full load			±5	%
Short Circuit Protection	Short Term			1 Sec	
Line Regulation	For 1.0% OF Vin		1.2		%
Load Regulation	10% To 100% F.L			10	%
Ripple & Noise	BW=DC To 20MHz			100	mVp-p
Transient response setting time	50% load step change		350		us

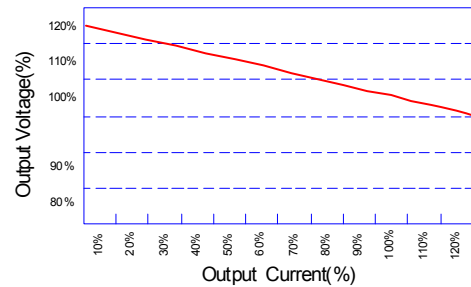
General Specifications					
Parameters	Conditions	Min	Typ	Max	Units
Isolation Resistance	500Vdc	1000			MΩ
Switching Frequency	Full load,nominal input		100		KHz
Operation Temperature		-40		+85	°C
Humidity	Non Condensing			95	%
Cooling	Free air Convection				
Case material	DAP				
MTBF	MIL-HDBK-217F@25°C	3500000			Hours
Weight			2.7		g
Dimensions			19.5x7.1x10.0		mm

1000Vdc Isolation Dual Output 3 Watt Dc-Dc Converter

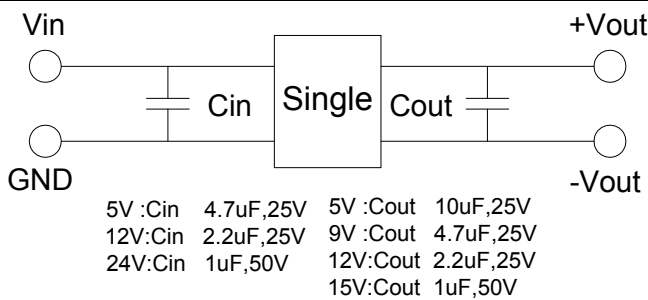
Temperature Derating Graph



Tolerance Envelope Graph



Recommended Test Circuit

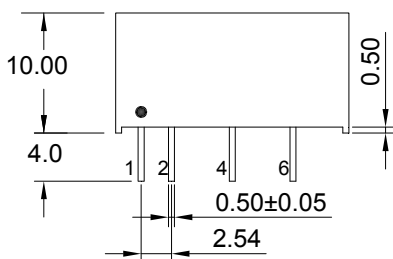
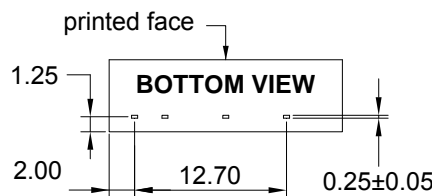
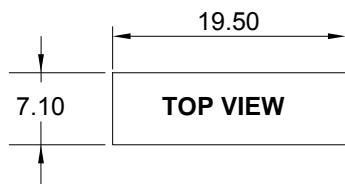


Part Number

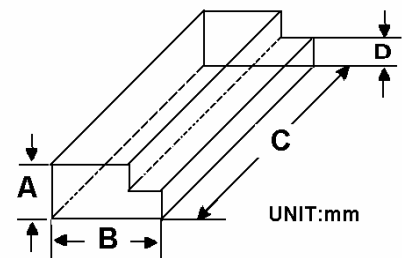
AS3 - 05 D 05 W F
1 2 3 4 5 6

- 1:Series
- 2:Input Voltage
- 3:DUAL Output
- 4:Output Voltage
- 5:Case
- 6:Efficiency > 85%

Markings and dimensions



Packaging



UNIT:mm Unless otherwise specified,all tolerances are ±0.25

PIN Connection				
PIN	1	2	4	6
Single	+Vin	-Vin	-Vout	+Vout

Size(mm)			
A	B	C	D
9.5	16.5	522	5.0