

6000Vdc Isolation Dual 1Watt Dc-Dc Converter

FEATURES:

- 24PIN DIP Package
- High Efficiency up to 85%
- Unregulated Output Types
- Internal SMD Construction
- No External Component Required Industry Standard Pinout
- Operating Temperature:-40°C To +85°C

Specifications typical at TA=25°C, nominal input voltage and rated output current unless otherwise specified

Part Number	Output Voltage	Output Current	Efficiency
	Vdc	mA	%TYP
AS1-xxD05L6	± 5	± 100	70
AS1-xxD09L6	± 9	± 56	75
AS1-xxD12L6	± 12	± 42	78
AS1-xxD15L6	± 15	± 34	80
AS1-xxD24L6	± 24	± 21	82

Note:1."XX" Is Input Voltage:05=5Vdc,09=9Vdc,12=12Vdc,15=15Vdc,24=24Vdc.

2. The input voltage increases, there will be an increase in efficiency

Input Specifications

Parameters	Conditions	Min	Typ	Max	Units
Voltage Tolerance	Vo, Io Nom			± 10	%
Filter	Capacitor				

Output Specifications

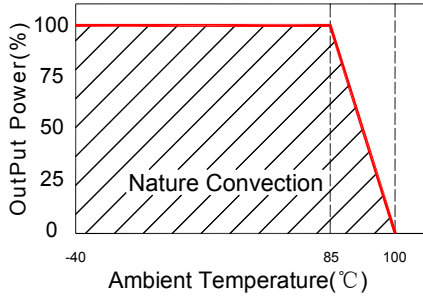
Parameters	Conditions	Min	Typ	Max	Units
Voltage Tolerance	100% full load			± 5	%
Short Circuit Protection	Short Term			1Sec	
Ripple & Noise	BW=DC To 20MHz			100	mVp-p
Line Regulation	For 1% of Vin		1.2		%
Load Regulation	5V (20% To 100% F.L)			15	%
Load Regulation	9V,12V,15V,24V (20% To 100% F.L)			10	%
Transient response setting time	50% load step change		350		us

General Specifications

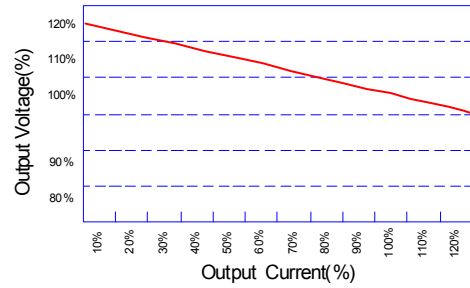
Parameters	Conditions	Min	Typ	Max	Units
Isolation Resistance	500Vdc	1000			MΩ
Switching Frequency	Full load,nominal input		50		KHz
Operating Temperature		-40		+85	°C
Humidity	Non Condensing			95	%
Cooling	Free air Convection				
Case material	DAP				
MTBF	MIL-HDBK-217F@25°C	3500000			Hours
Weight			9.5		g
Dimensions			33.02x14.73x10.41		mm

6000Vdc Isolation Dual 1Watt Dc-Dc Converter

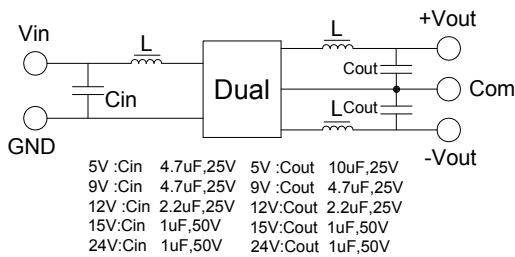
Temperature Derating Graph



Tolerance Envelope Graph



Recommended Test Circuit

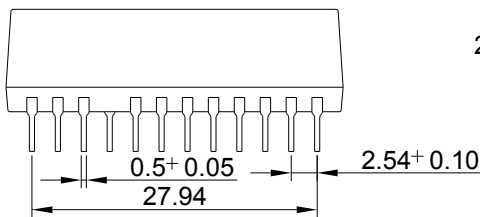
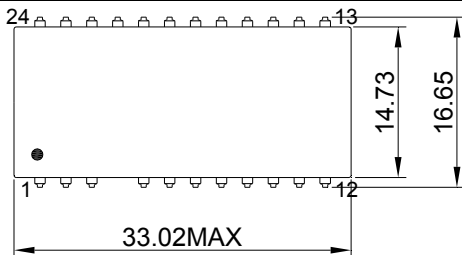


Part Number

AS1 - 05 D 05 L 6
 1 2 3 4 5 6

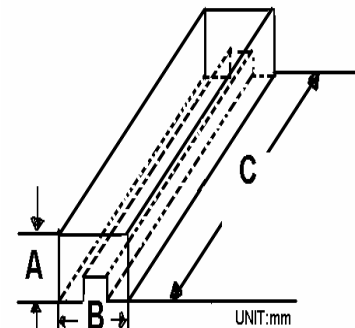
- 1:series
- 2:Input Voltage
- 3:Dual Output
- 4:Output voltage
- 5:Case
- 6:6000Vdc Isolation

Markings and dimensions



Unit:mm Unless otherwise specified,all tolerances are ±0.25

Packaging



Size(mm)		
A	B	C
13.23	12.30	530

PIN Connection

PIN	1	2	8,17	10,15	12,13	Other
DUAL	+Vin	-Vin	-Vout	Com	+Vout	NC