

Features

1WATT SIP PACKAGE
 EFFICIENCY TO 75%
 100% BURNED IN
 UL 94V-0 PACKAGE MATERIAL
 CUSTOM SOLUTIONS AVAILABLE
 UNREGULATED OUTPUT TYPES



**1 Watt DC/DC
 Converter**

1 Watt Single O/P
 Isolated DC-DC Converter

Input Specifications

Input Voltage :5Vdc
 Input Voltage Range :±10%

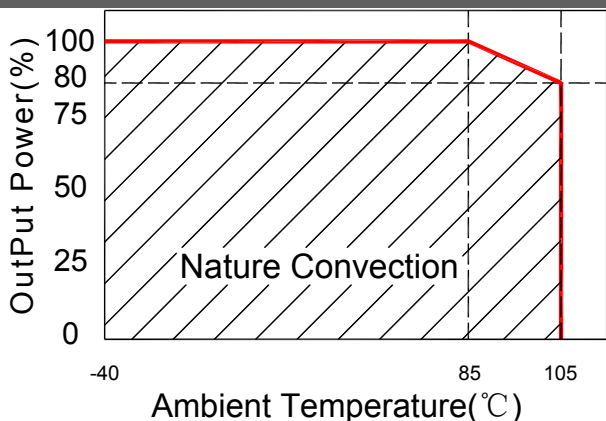
Output Specifications

Output Voltage :3.3Vdc
 Output Voltage Accuracy :±5% Vout=3.135-3.465Vdc Vin=5Vdc
 Output Current :303mA
 Efficiency :75% TYP
 Ripple / Noise :100mVp-p MAX 20MHz Bandwidth
 Short Circuit Protection :Continuous
 Line Regulation :±1.2% TYP For 1.0% OF Vin
 Load Regulation :±15% MAX 10% to 100% full load

General Specifications

Operating Temperature Range :-40°C ~ +105°C
 Storage Temperature :-55°C ~ +125°C
 Switching Frequency :100KHz TYP
 Humidity :95% MAX
 Isolation Voltage :6000Vdc Input to Output (2sec/0.5mA)
 Isolation Resistance :1000MΩ MIN 500Vdc
 Cooling :Free air convection
 MTBF :>3500000 Hours MIL-HDBK-217F 25°C ,Ground Benign.
 Case Material :DAP
 Weight :4.0g TYP

Temperature Derating Graph

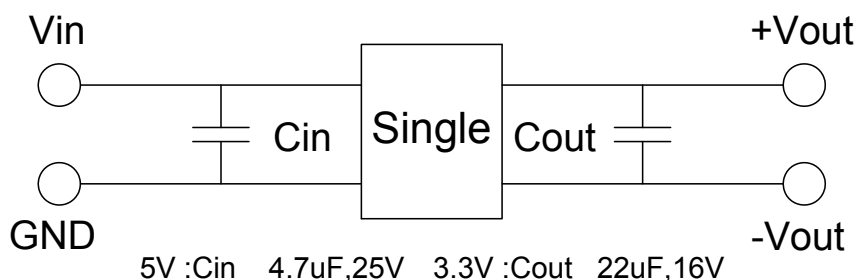


Part Number

AS1A - 05 S 03 G 6 C
 1 2 3 4 5 6 7

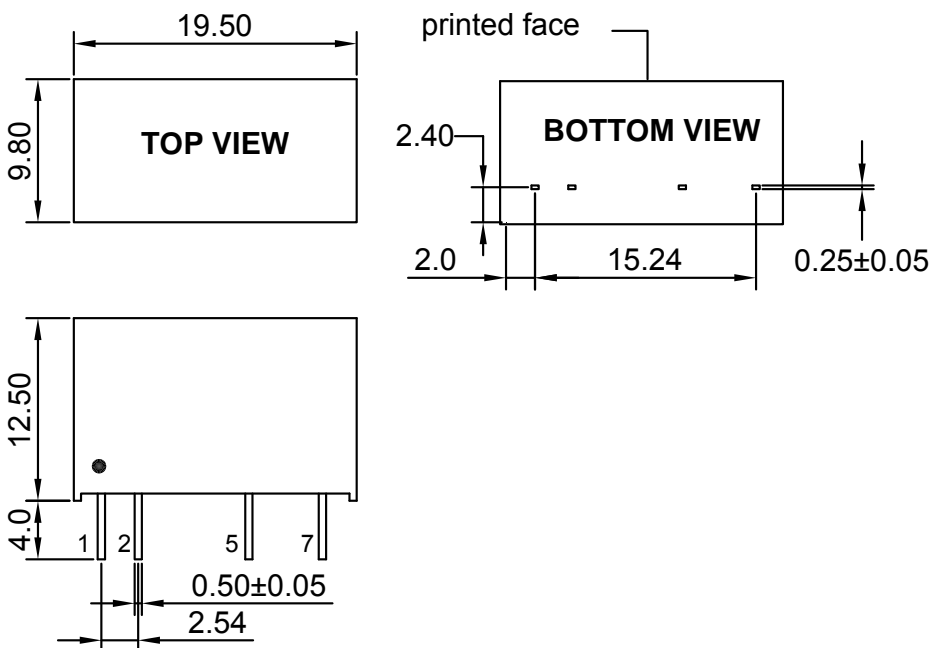
- 1:Series
- 2:Input Voltage
- 3:(S) Single (D) Dual Output
- 4:Output Voltage
- 5: Case
- 6:Isolation Voltage 6000KVdc
- 7.Short Circuit Protection Continios

Recommended Test Circuit



To make sure the product work at perfect operation status with full loading external capacitor is necessary and it is recommended to use high frequency low resistance electrolytic capacitor.

Outline Dimensions



UNIT:mm Unless otherwise specified,all tolerances are ±0.25

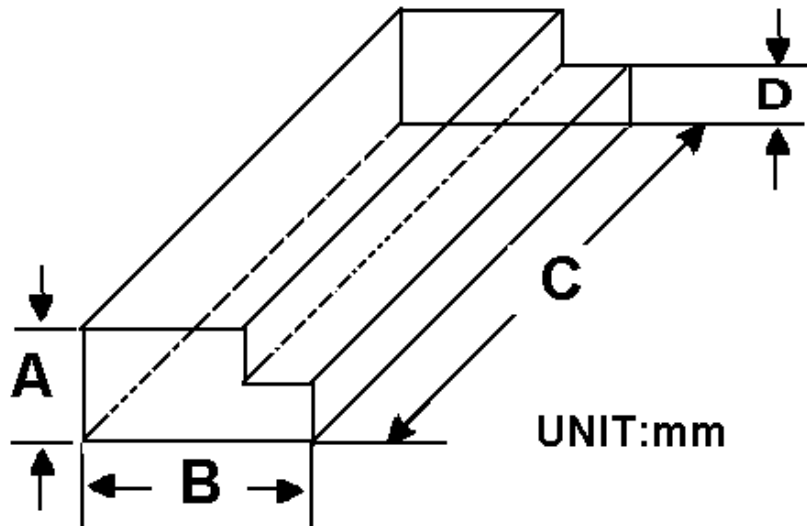
PIN	1	2	5	7
Single	+Vin	-Vin	-Vout	+Vout

AS1A-05S03G6C

Packing Information:

Weight----- 4.0grams/pcs

TUBE-----25pcs



Size(mm)			
A	B	C	D
12.0	28.55	550	6.00