

Features

1WATT SIP PACKAGE
 EFFICIENCY TO 77%
 100% BURNED IN
 UL 94V-0 PACKAGE MATERIAL
 CUSTOM SOLUTIONS AVAILABLE
 UNREGULATED OUTPUT TYPES

**Input Specifications**

Input Voltage	:5Vdc
Input Voltage Range	:± 10%

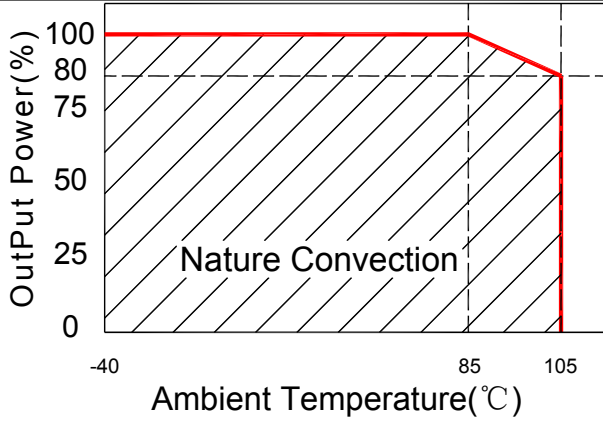
Output Specifications

Output Voltage	:5Vdc	
Output Voltage Accuracy	:± 5%	Vout=4.75-5.25Vdc Vin=5Vdc
Output Current	:200mA	
Efficiency	:77% TYP	
Ripple / Noise	:100mVp-p MAX	20MHz Bandwidth
Short Circuit Protection	:Continuous	
Line Regulation	:± 1.2% TYP	For 1.0% OF Vin
Load Regulation	:± 15% MAX	10% to 100% full load

General Specifications

Operating Temperature Range	:-40°C ~ +105°C	
Storage Temperature	:-55°C ~ +125°C	
Switching Frequency	:100KHz TYP	
Humidity	:95% MAX	
Isolation Voltage	:6000Vdc	Input to Output (2sec/0.5mA)
Isolation Resistance	:1000MΩ MIN	500Vdc
Cooling	:Free air convection	
MTBF	:>3500000 Hours	MIL-HDBK-217F 25°C ,Ground Benign.
Case Material	:DAP	
Weight	:4.0g TYP	

Temperature Derating Graph

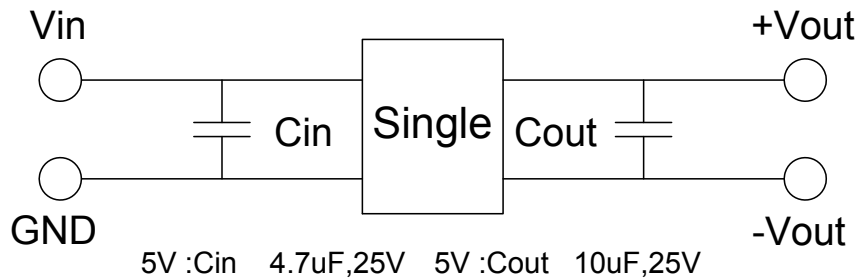


Part Number

AS1A - 05 S 05 G 6 C
 1 2 3 4 5 6 7

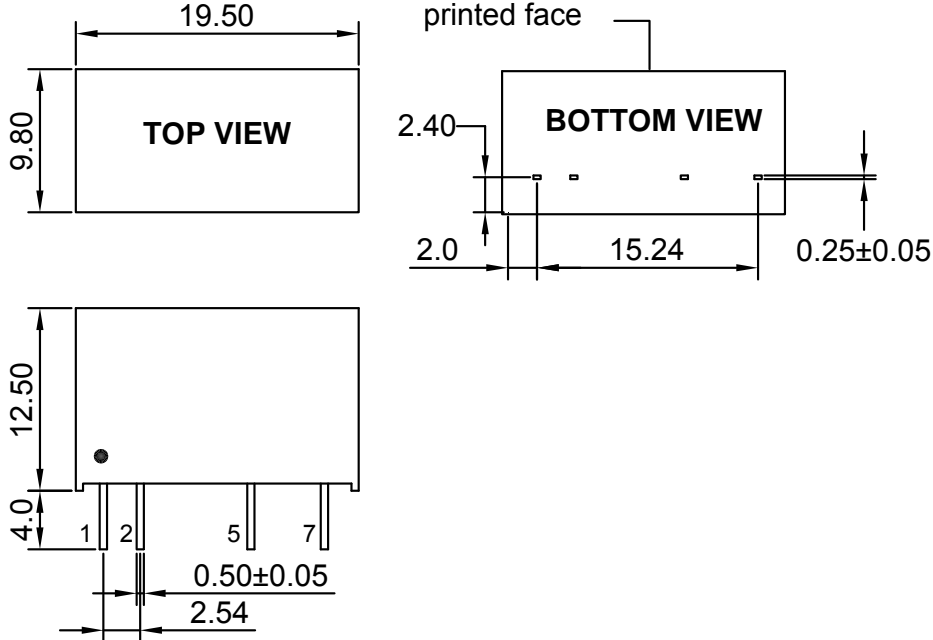
- 1:Series
- 2:Input Voltage
- 3:(S) Single (D) Dual Output
- 4:Output Voltage
- 5:Case
- 6:Isolation Voltage 6000KVdc
- 7.Short Circuit Protection Continuous

Recommended Test Circuit



To make sure the product work at perfect operation status with full loading external capacitor is necessary and it is recommended to use high frequency low resistance electrolytic capacitor.

Outline Dimensions



UNIT:mm Unless otherwise specified,all tolerances are ±0.25

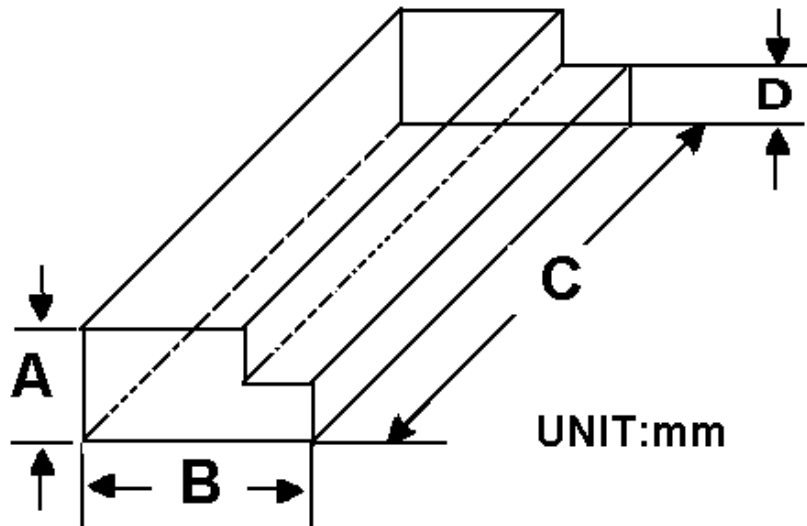
PIN	1	2	5	7
Single	+Vin	-Vin	-Vout	+Vout

AS1A-05S03G6C

Packing Information:

Weight----- 4.0grams/pcs

TUBE-----25pcs



Size(mm)			
A	B	C	D
12.0	28.55	550	6.00